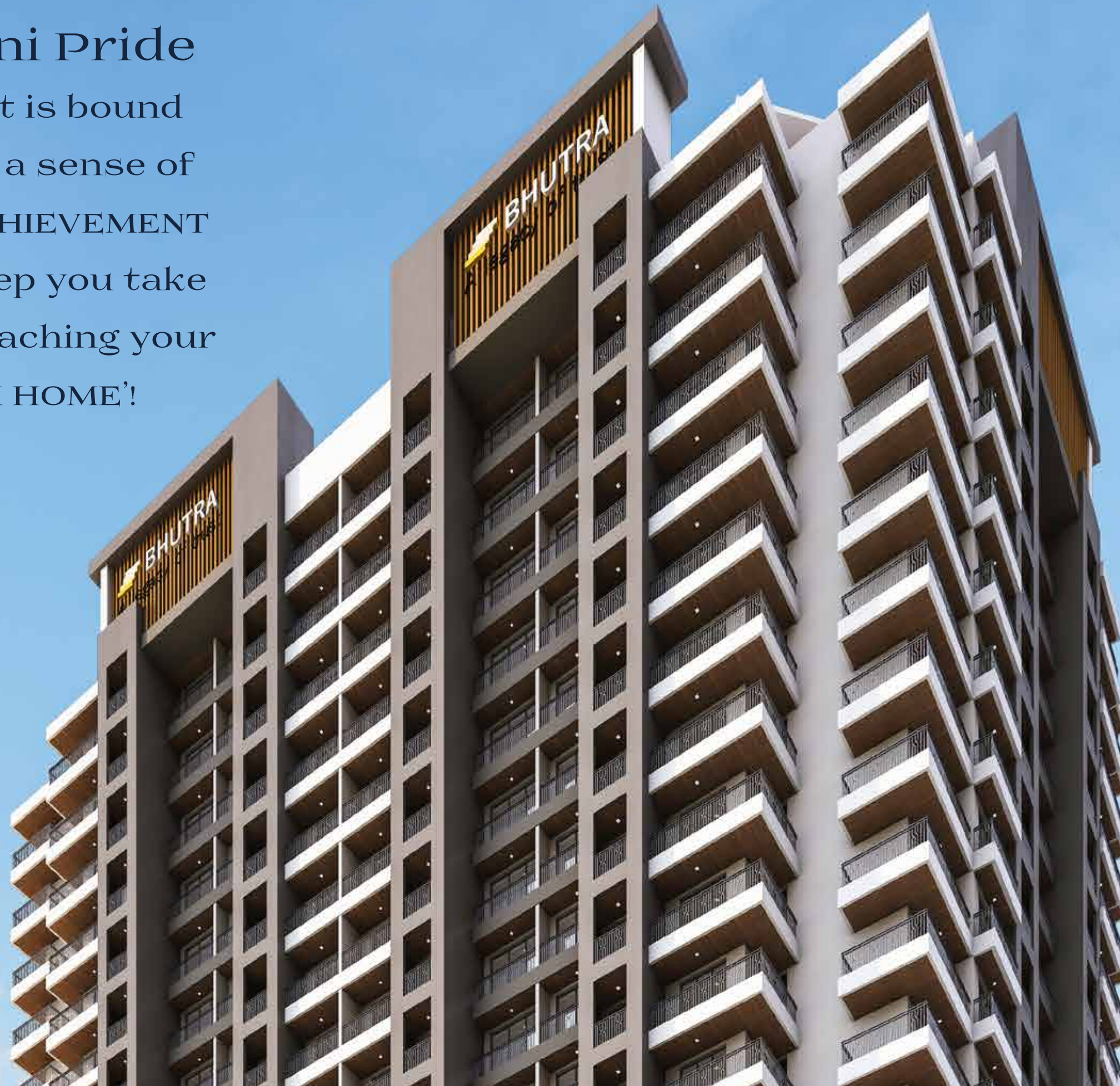




Start an upgraded  
Luxurious Lifestyle



At Anjani Pride  
your heart is bound  
to fill with a sense of  
PRIDE & ACHIEVEMENT  
at every step you take  
towards Reaching your  
'DREAM HOME'!





ANJANI PRIDE

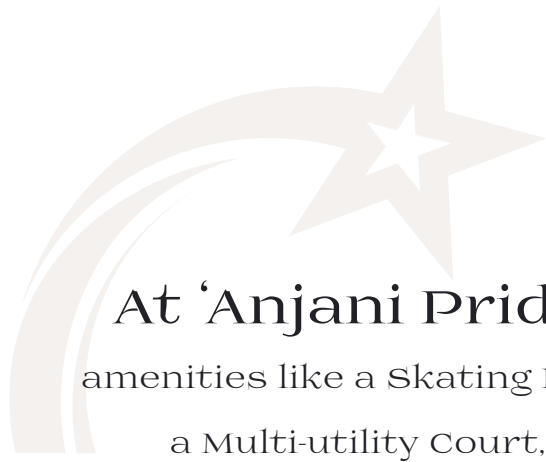
BHUTRA  
legacy of trust

Artist's Impression



**At first  
the majestic elevation  
steals your heart  
then  
the luxurious lobby  
bowl's you over.**

The luxurious finesse,  
finished with extreme attention to detail..  
the warmly lit lobby welcomes you with  
love & affection instilling a sense of pride  
amongst your loved ones  
for your new found success.



## At 'Anjani Pride'

amenities like a Skating Rink,  
a Multi-utility Court,  
Basket Ball Hoop,  
a Senior Sitout,  
Walk Areas & Kids Play Areas  
are just enough to help your  
loved ones spend  
an eventful day  
with their friends and family.



- 1 BASKET BALL HOOP
- 2 ENTRANCE FOYER
- 3 SENIOR CITIZEN SITOUT
- 4 BADMINTON COURT
- 5 MULTI PURPOSE TURF



1

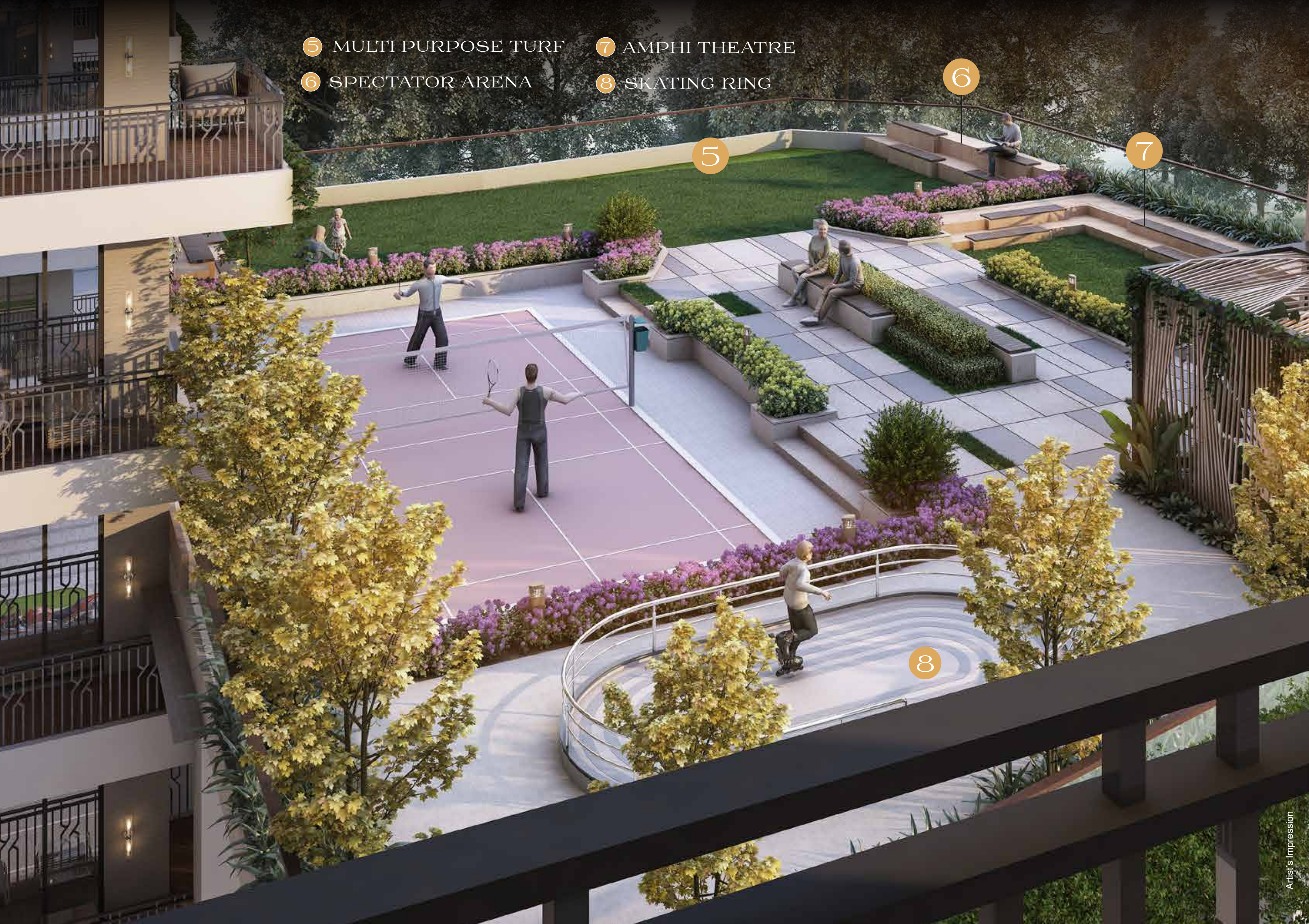
2

3

4

5

- 5 MULTI PURPOSE TURF
- 6 SPECTATOR ARENA
- 7 AMPHI THEATRE
- 8 SKATING RING





Paved R. G.

Entry/Exit

12 m w. Internal road

Entry/Exit

GROUND FLOOR PLAN





TYPICAL FLOOR PLAN



**PODIUM AMENITIES**

**GROUND FLOOR AMENITIES**





Skating Rink



Badminton Arena



Senior Citizen Area



Multi-purpose Turf



Half Basketball Court



Entrance Foyer



Rappeling Wall



Walkway Seating





# OTHER AMENITIES



24X7 CCTV ENABLED RESIDENCES



GRAND ENTRANCE LOBBY



GYMNASIUM

HIGH-SPEED ELEVATORS



TODDLER PLAY AREA



SEMI MODULAR KITCHEN



SCHOOL BUS PICK-UP POINT

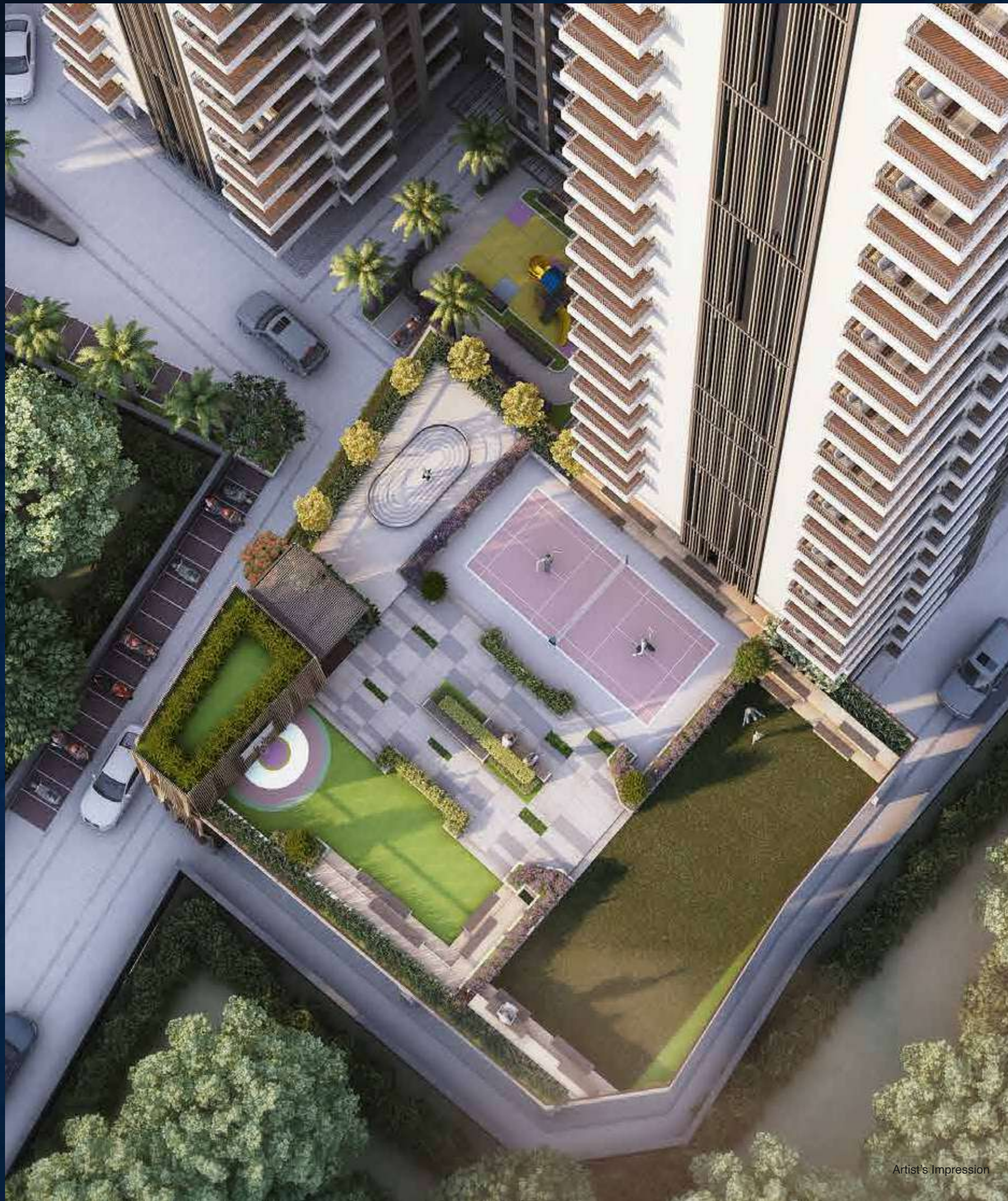


BATHROOM FITTING WITH COUNTER BASIN

• 3.05 mtr FLOOR TO FLOOR HEIGHT

• 4'X2' LARGE TILES TO GIVE A SPACIOUS FEEL TO THE HOME

• DUMAL SERIES WINDOWS



Artist's Impression

## An Ideal Location



# ANJANI PRIDE

HOMES THAT WILL MAKE YOU PROUD

LIAISING ARCHITECT ★ M/s Anish & Associates ★	DESIGNING ARCHITECT ★ DIMENSIONS Project Consultants (Rajesh Bulsara) ★	MEP ★ MAK MEP Consultants ★	RCC CONSULTANT ★ M/s Pro-tech Consultant ★	LEGAL ADVISOR ★ Adv. P. Hari ★
--	--	--------------------------------	---	-----------------------------------

PROJECT DEVELOPED BY



+91 98199 74715 | +91 97687 90511 | [www.bhutra.in](http://www.bhutra.in)

Site Address: Anjani Pride, Salasar Balaji Nagar, Near Kanungo Estate, Way from Payade Hotel, Miraroad (East), Thane- 401107.

Office Address: 1st Floor, Milan Plaza, 90 Feet Road, Bhayandar (West), Thane-401101.

MAHARERA NO.: P51700024335

Disclaimer: The Plans, Specifications, Elevation, Amenities, Images and other details herein are only indicative and subject to the approval of concerned authorities. The Developer / Realtors reserves the right to change any or all of these in the interest of the development without prior notice or obligation. The printed material does not constitute an offer and / or contract of any type between the Developer / Realtors & the recipient. Any purchases of premises shall be governed by the terms and conditions of the agreement for sale entered between the parties, and no details mentioned in this brochure shall in any way govern such transactions.



HOMES THAT WILL MAKE YOU PROUD